

# The Catholic Church of St Alphonsus



THE CATHOLIC CHURCH OF  
**ST. ALPHONSUS**

**All Parish Meeting  
November 15, 2009**

The Catholic Church of

**ST. ALPHONSUS**

1959



2009

*Celebrating 50 years*



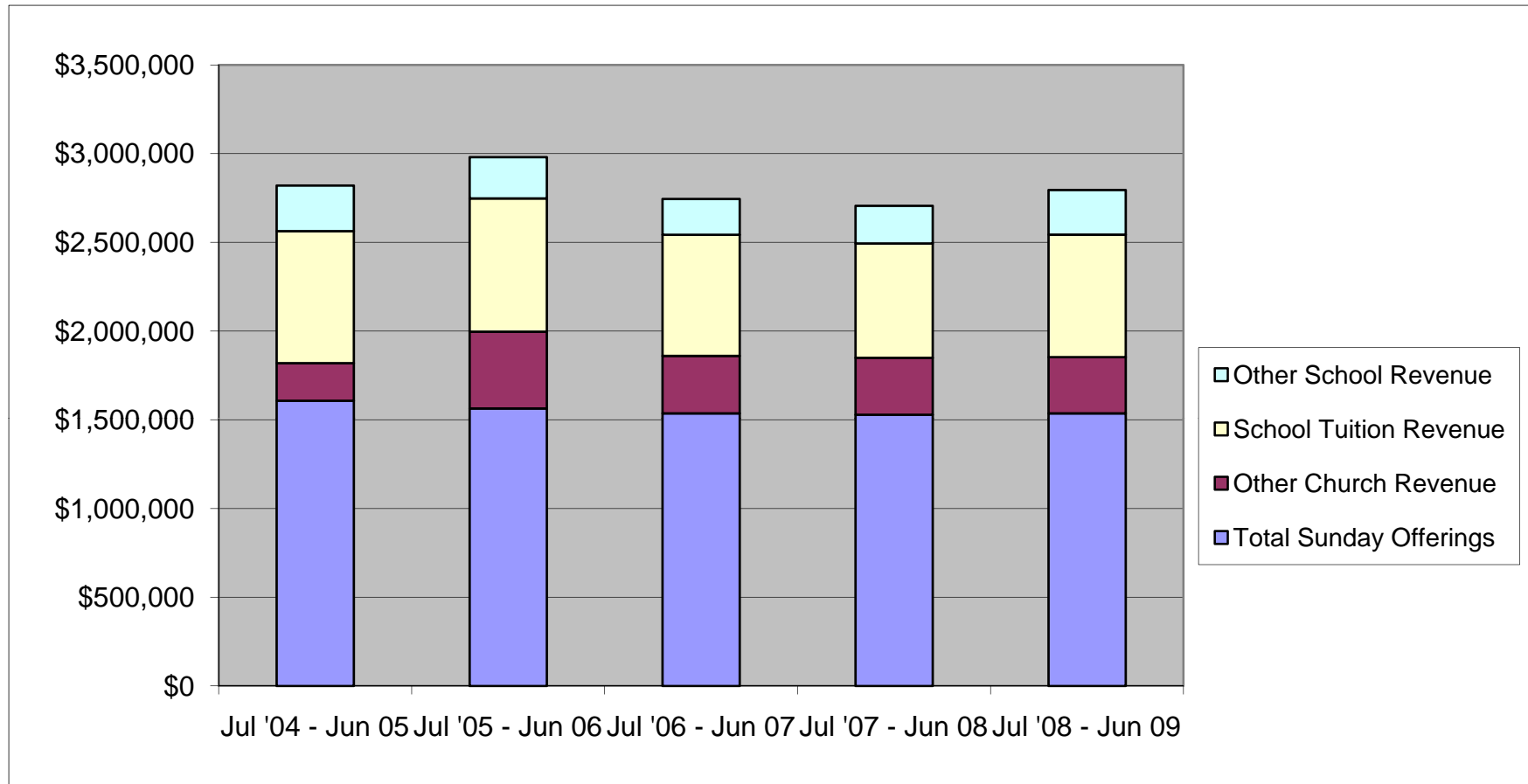
# St. Alphonsus Parish and School

Financial Trends and Observations

-

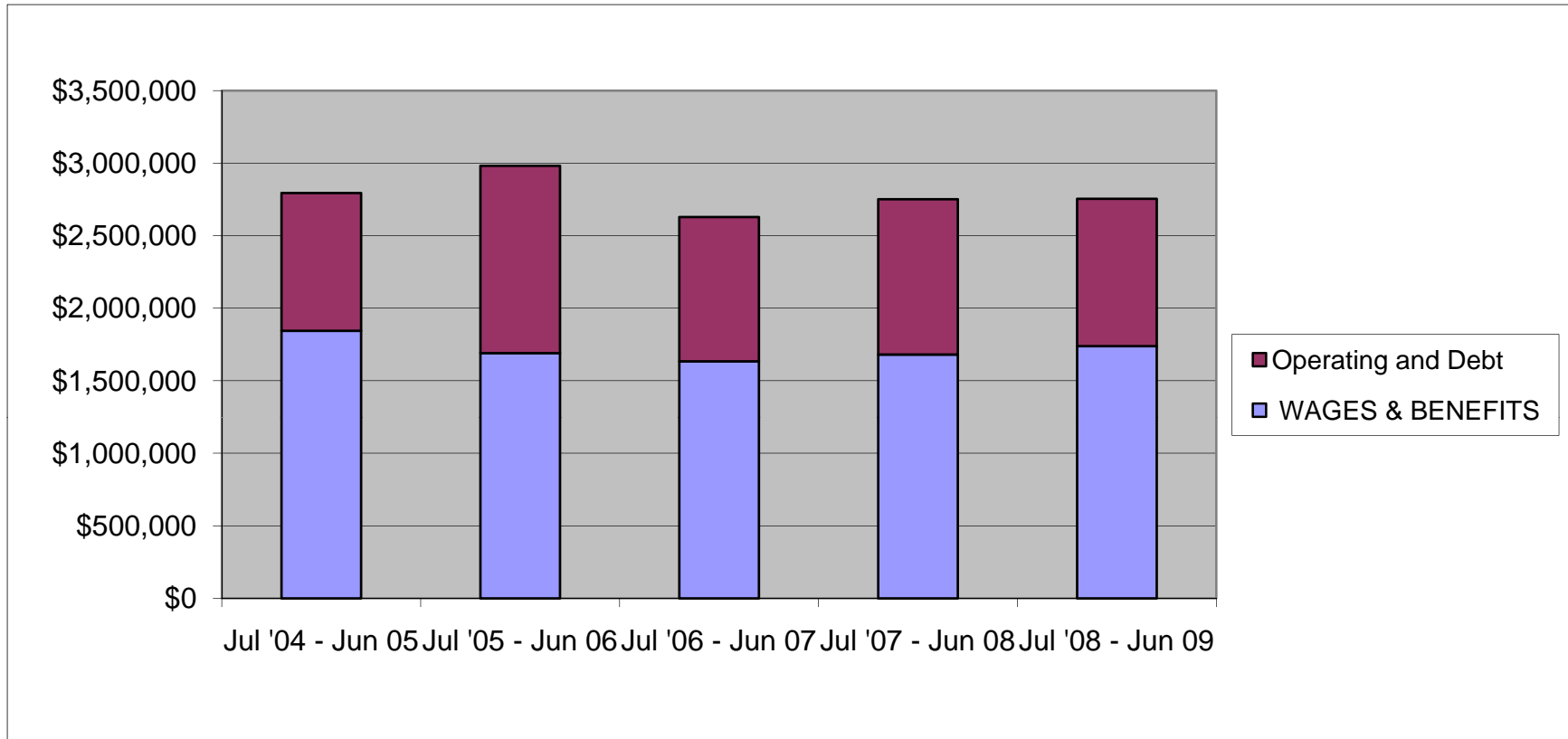
Sunday, November 15, 2009

# St. Al's Revenue Trends '09



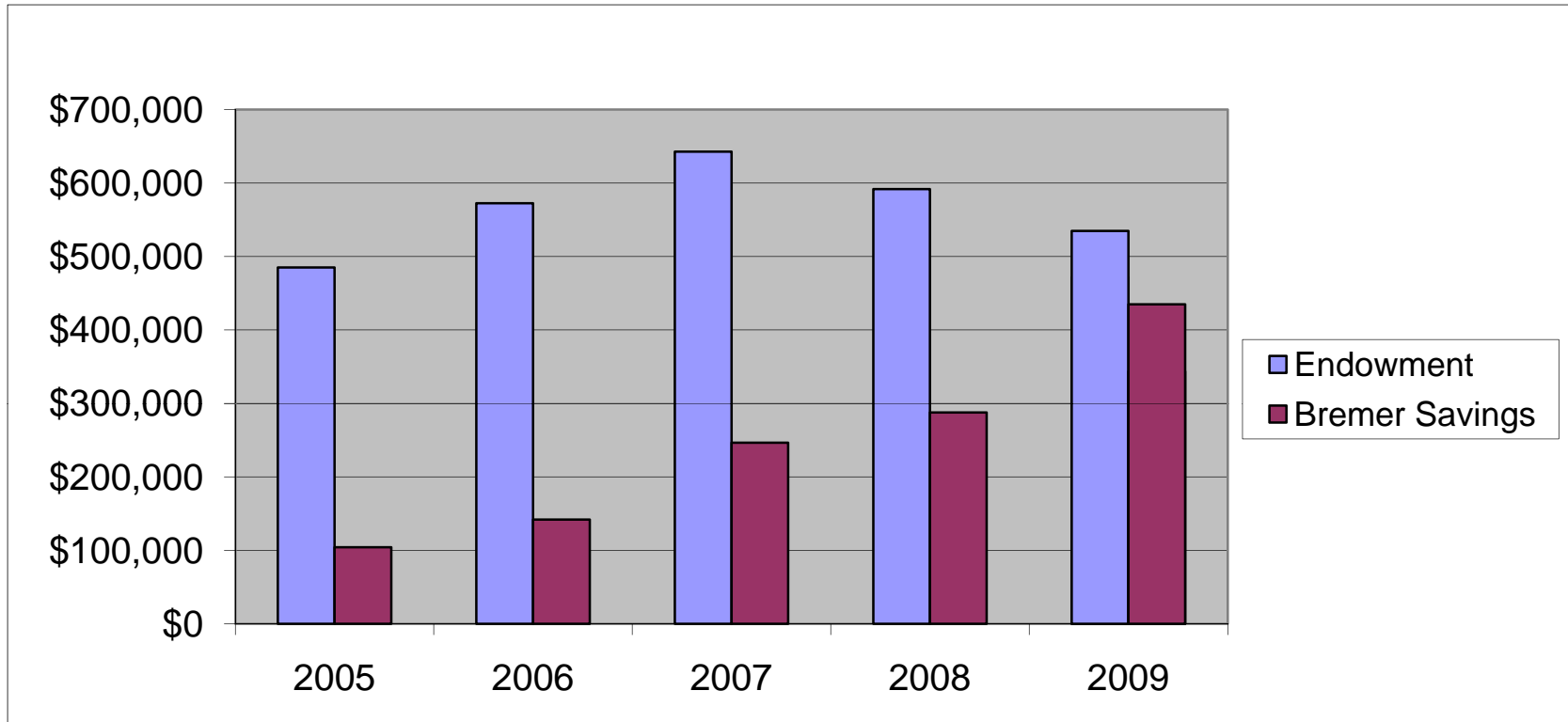
- **Increases in '05 and '06 Other Church Revenue reflects sale of Parish owned house.**
- **Increases of '07 and '08 Other Church Revenue reflects start of extra monthly Debt Reduction collections (\$110,525 in '07 and \$128,319 in '08).**
- **Sunday offerings are holding steady.**
- **School tuition and other school revenue are showing increases.**

# St. Al's Expenditure Trends '09



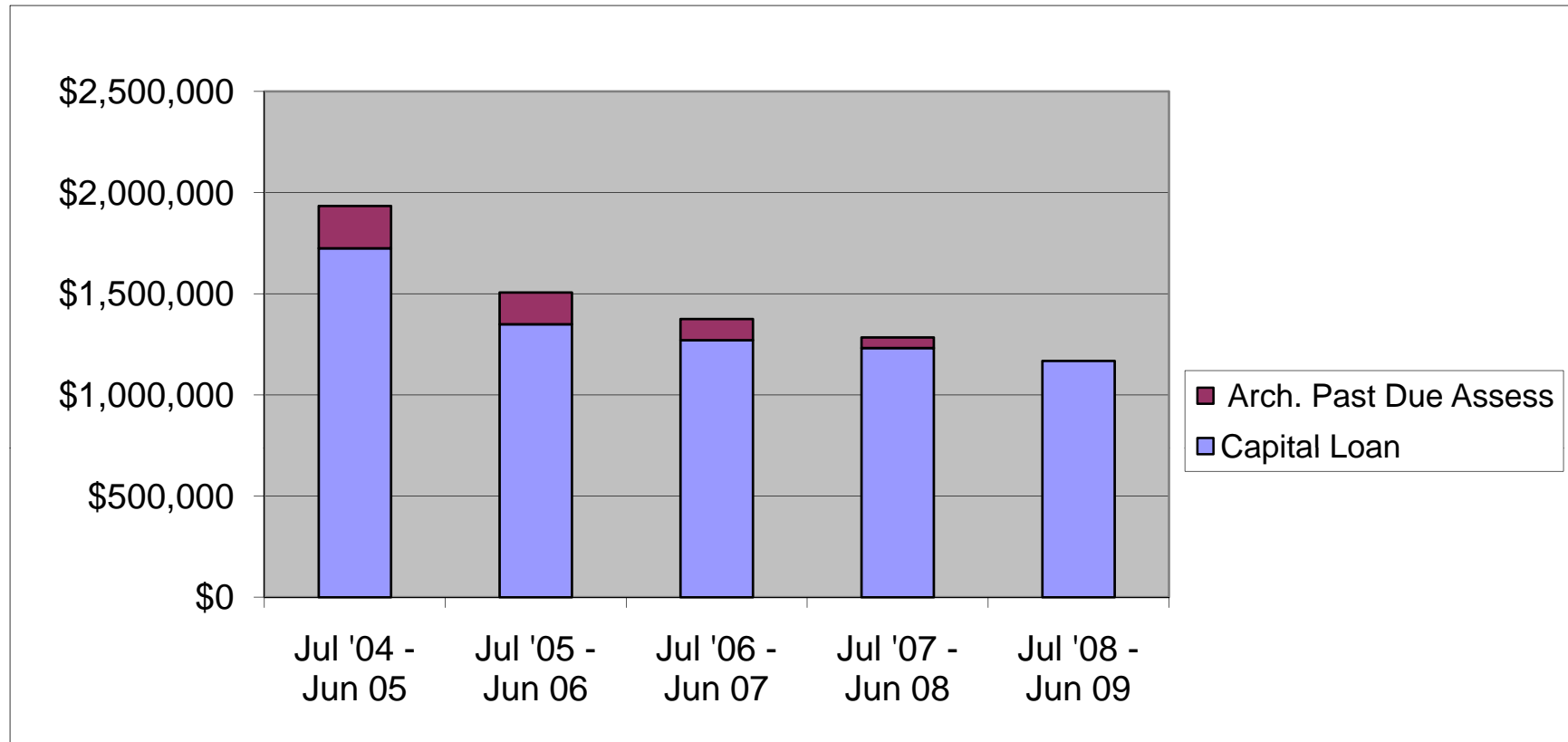
- Increases in '05 and '06 Operating and Debt expenditure reflects extra loan principle payment (from house sale).
- Wages and benefits holding steady with operations and debt load declining.

# St. Al's Savings Trends '09



- Endowment was down to \$400,289 from the 2007 high of \$674,000.
- Endowment has recovered \$133,331 (33%) during the last two quarters
- Bremer Church and Money Market accounts have risen.
- Prudent measures have been taken to protect savings by splitting Money Market funds into two accounts to comply with FDIC limits.
- Information reflects continued commitment to focus on saving for the future.

# St. Al's Long Term Liabilities Trends '09



- Past due Archdiocese Assessment obligations **ARE PAID IN FULL** (paid off \$262,000 in 5 years).
- Capital Loan is a refinanced Knights of Columbus (in 2007) with a lower interest rate of 5.98% and is locked in for 20 years (with no balloon payment). Monthly payment went from \$11,700 to \$9,299 (a savings of about \$2400 per month) and is made with your Debt Reduction envelopes. Any contributions above the loan obligation will be used to pay down additional principle.
- Debt reduction collections are running under for the year. Possible \$12,000 shortfall payment from operating budget.
- *Thank you for all your contributions towards St. Alphonsus' Loan Debt.* If you have any questions about the loan, please contact Karen Evans in the Business Office 763-503-3389.

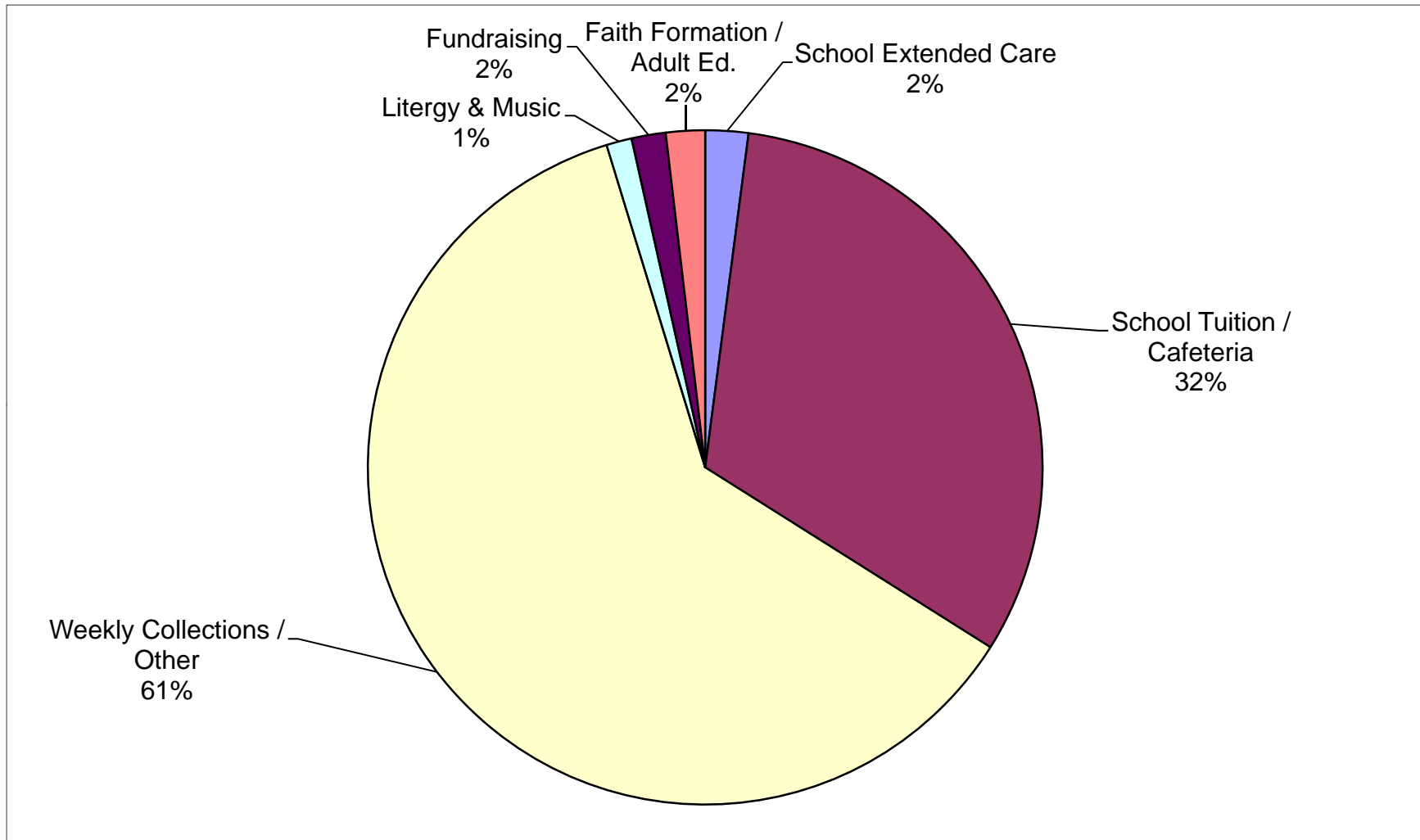
# KC Loan In Review '09

Original Loan Commitment	
Loan Amount:	\$1,300,000
Interest Rate:	5.98%
Started:	10/2007
Original Payoff	11/2027
Monthly Payments	\$9,298

Extra Principle Payment Detail			
	Collections	Sweepstakes	
07 - 08	\$5,908	\$16,532	
08 - 09	<u>\$10,787</u>	<u>\$13,340</u>	
	\$16,695	\$29,872	<b>Total Extra Principle Payments: \$46,567</b>

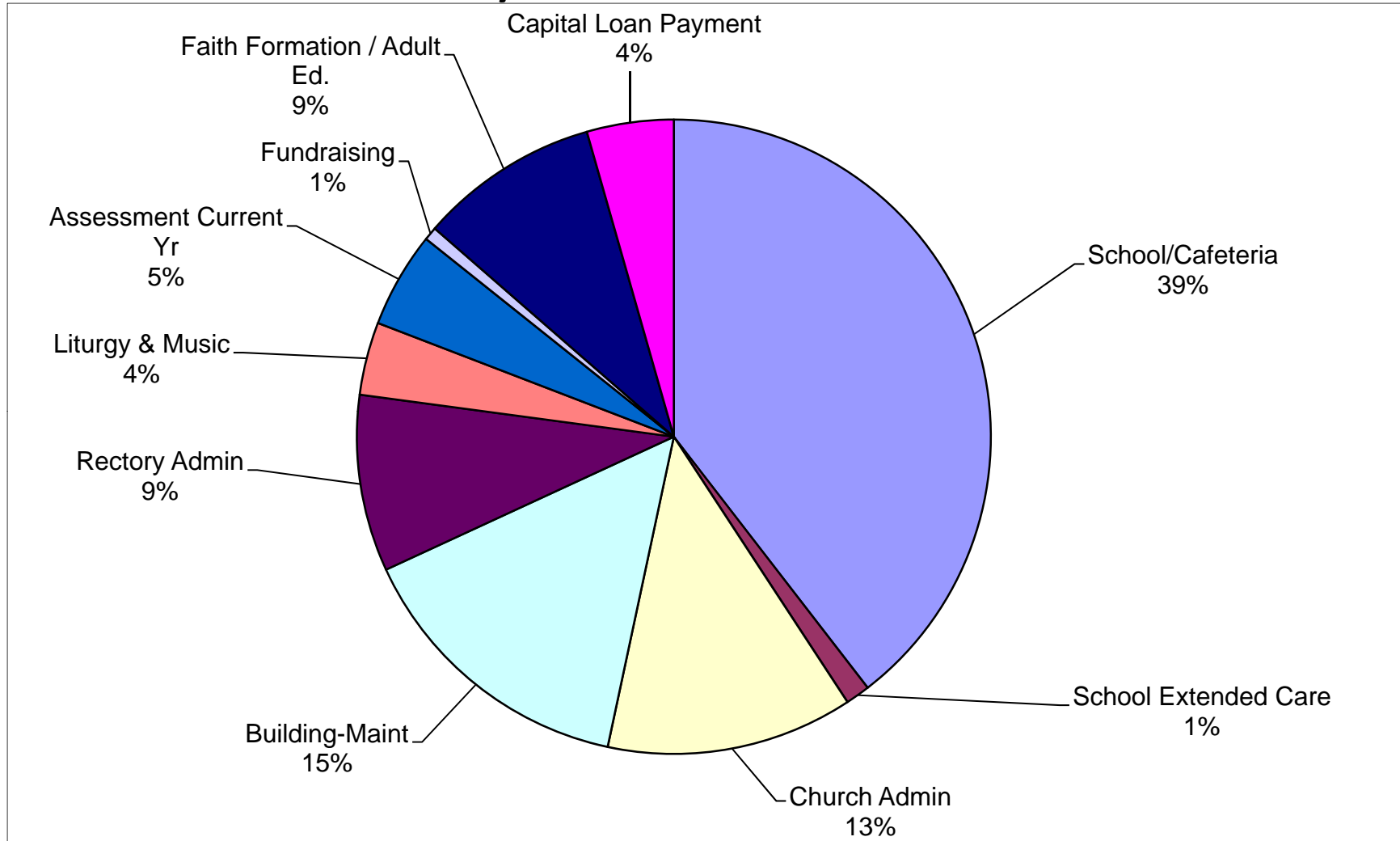
Savings as of 6/2009	
New Payoff Date	1/2026
# of Payments Saved	22
Total Extra Principal Payments	\$46,567
Total interest Savings	\$158,001
Total Loan Savings	\$204, 568
Loan Balance as of 6/2009	\$1,168,256

# St. Al's Money Sources Fiscal Yr End '08 – '09



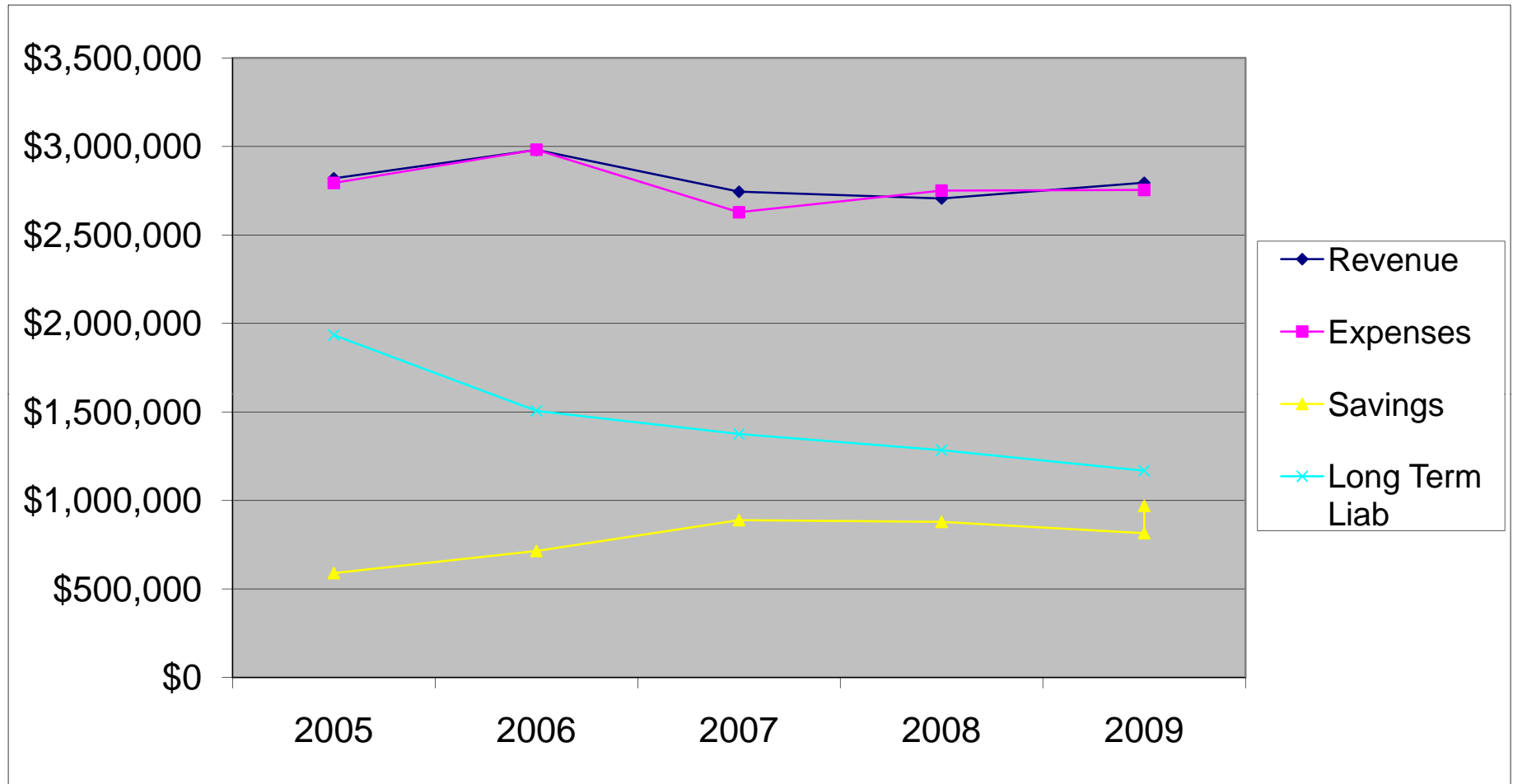
- Roughly 95 % of income comes from combined revenue sources like Sunday collections and other Parish sources along with School tuition, cafeteria, child care and fund raising events.

# St. Al's Money Uses Fiscal Yr End '08 – '09



- Combined 15% (down from 18%) for Parish and School building and maintenance reflects the commitment to supporting and maintaining physical plant and infrastructure.
- Uses reflect valued commitment to a wide variety of programs, ministries and obligations.

# St. Al's "Big Picture" Trends '08 – '09



- Revenue and expenses continue to trend closely.
- Compared to last year, revenue has turned upward as expenses remain steady to higher.
- Savings investments have followed the economic decline with some sharp increases noted from June 09 to September 09.

## 2008-09 Budget Update

- Finance Council recommended in June 2009 a bottom-line budget for 2009-10 of -\$21,000.
- The Parish Council approved this budget with the recommendation for continued expense awareness and a committed focus on future revenue.
- Economic conditions continue to pressure budgets. Some investment relief has been realized.
- Budget constraints impact a pro-active approach to infrastructure support and maintenance. More expensive, reactive approaches to maintenance prevail.
- New stewardship initiatives, in part, will help to position the Parish to be more pro-active with maintenance and repairs and ultimately save money in the long term.

# St. Alphonsus Finance Commission

- Fr. Pat Grile C.Ss.R. 763-561-5100
- Ed Daley 763-566-5232
- Karen Evans 763-503-3389
- Dave Johnson 763-503-3344
- Pam Lehner 763-315-1884
- Joe McCue 763-493-5754
- Denise Muehlberg 763-315-9375
- Tom Smude 763-315-1964
- Lynne Wyffels 763-315-3432



# St. Alphonsus Parish and School

School Highlights

-

Sunday, November 15, 2009

## School Environment

- Committed Redemptorist Involvement
- Parish Support and Cooperation
- Dedicated, Loyal and Professional Staff
- Involved and Committed Parents
- A Student Body dedicated to the mission

# School Activities

- Faith and Value Based Education
  - Religion Classes
  - Weekly mass participation
  - Positive examples to one another
- Accredited Through MNSAA
- Class Sizes
- Strong Math and Sciences
- New 8<sup>th</sup> Grade Math Program / State Stds
- New Reading Program
- Technology Skills
- Athletic Opportunities

# Changes and Opportunities

- Demographics
- Family Finances and Tuition
- Juan and Adela Rosas
  - School Hot Lunch Program
  - Parish Functions
  - Leadership
- Future
  - 2<sup>nd</sup> Kindergarten
  - Exploring Possibilities for a Pre School
  - Promoting Extended Day Care Services (Third Base)

# Parish Administrators Report

## 2004-2009 Capital Improvements and Building Repairs History

Capital Improvement	\$683,637
<u>Building Repairs</u>	<u>\$138,363</u>
Total	\$822,000

### “Keeping a Roof over our Head”

Reroofed 1990 60,245 Sq. Ft. – Main Church, elementary school wing, rectory, gym  
New roof 1998 24,900 Sq. Ft. - CSSR Hall, Jr. High wing, gathering spaces and halls  
Bell Tower and surrounding surfaces– 2008 Repair and replace  
Faith Formation Building – estimate 1990 replacement

# Action Plan

Consult with Maintenance Committee and Finance Commission  
Formal inspection and assessment  
Prioritize and establish a time table  
Develop financing options

## Financing Options

Borrow or refinance existing loan  
Capital fund drive  
Build a capital reserve for repair, remodeling, expansion and construction

## Reserve Fund

Adapt to temporary changes in collections and expenses  
Recommend 2 to 3 months of operating expenses  
\$500,000 to 750,000

# **Additional Future Capital Funding Projects**

Exterior lighting replacement

Boiler repairs and overhaul

Parking lot resurfacing

Upgrade electric service

Church and CSSR Hall carpeting

HVAC Systems Upgrades and Replacement

Faith Formation Building windows and energy savings upgrades

Technology and sound system improvements

Asbestos abatement

**Thank You for Your Attention**

Dave Johnson  
Parish Administrator  
763-503-3344  
[djatstals@hotmail.com](mailto:djatstals@hotmail.com)

# THANK YOU!



THE CATHOLIC CHURCH OF  
ST. ALPHONSUS